

Santa Barbara Unified School District

Board Report #4

School Reopening

August 11, 2020

***REVISED 08/10/20**



Santa Barbara Unified
Every child, every chance, every day.

DRIVERS FOR SCHOOL REOPENING

Identifying priorities for fall 2020



Instruction

Models that support student and adult learning while maximizing engagement. Includes use of technology, including devices, to facilitate learning.

Community & Family Engagement



Active engagement of families and community partners to support learning.

Health & Wellness



Social emotional learning and supports for students and staff. Focus on health and hygiene.

Governance & Leadership



Coordination of services and policies with a lens toward equity and access.

Facilities & Operations



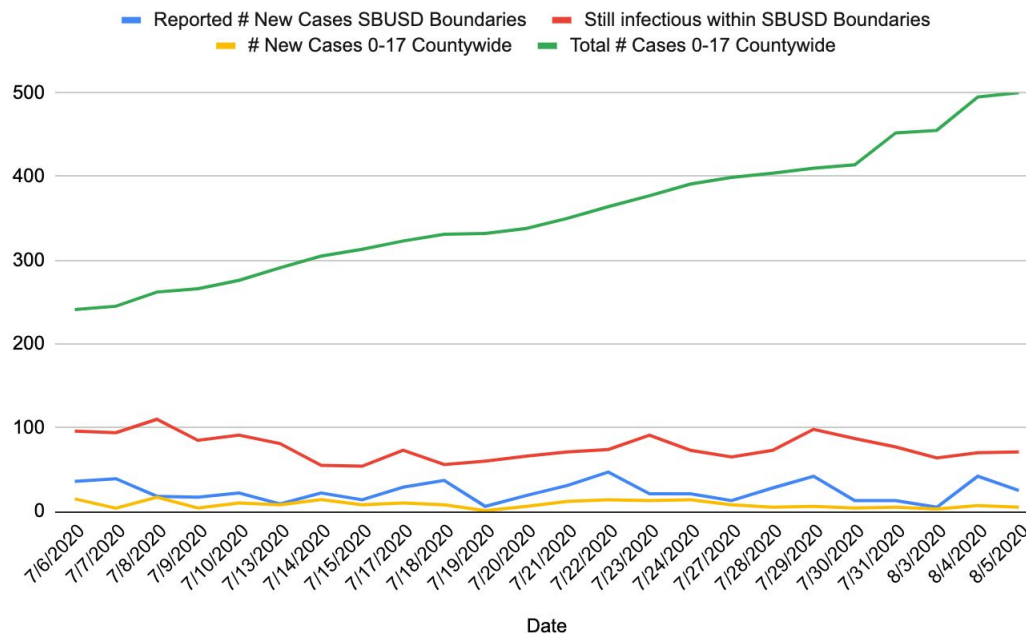
General guidelines for school and district operations, including transportation, cleaning and safety protocols.

Health & Wellness: Current COVID Rates



Santa Barbara Unified
Every child, every chance, every day.

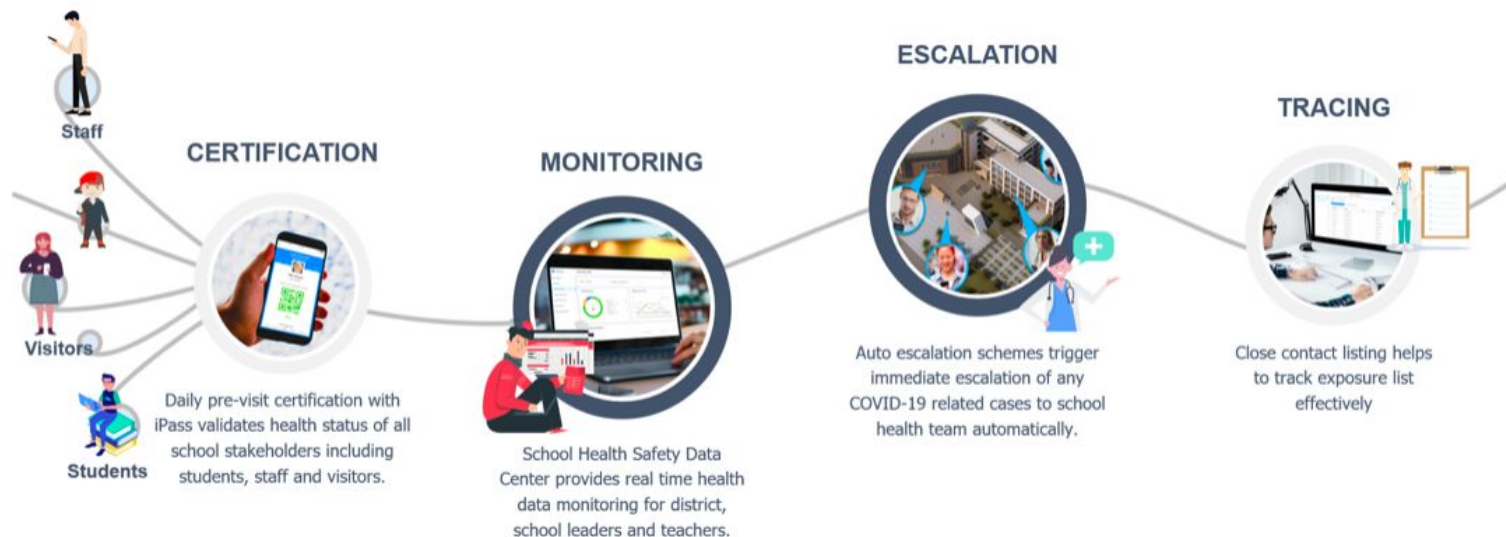
Reported # New Cases SBUSD Boundaries, Reported # Active Cases SBUSD Boundaries, # New Cases 0-17 Countywide and Total # Cases 0-17 Countywide





iPass Screening App

All students and employees will conduct daily passive screening checks at home via the iPass app before reporting to the campus or office. Visitors and those who do not complete their passive check will have to complete an active screening process upon arriving at campus.





\$100,000

Preschool through 6th Grade

- Students: Increased Access to Therapy
- Parents: Mindfulness with Parents
- Parents: COVID Coping Groups
- Staff: Reflective Practice and Consultation
- Staff: Webinars and Training in Trauma-Informed Practices



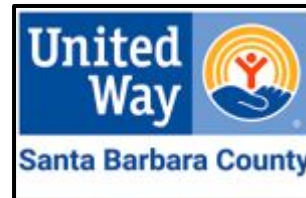
\$500,000

7th through 12th Grade

- Students: Mind Gym and Rebound Wellness Groups
- Students: Crisis Response for Suicidality
- Students: Increased Access to Therapeutic Services
- Screenings and Therapy
- Parents: “How to Foster Resilience” Group
- Parents: Coffee Chats/Charlas crianza con cariño
- Parents: Family Support Services
- Staff: Lunch Connection Groups
- Staff: Weekly Reflective Practice and Consultation
- Staff: Mental Wellness Opportunities



- Child care programs and child care providers can operate in the county based on the California Department of Public Health guidance
- After School Education & Safety (ASES) Program for children of Santa Barbara Unified staff (140+ children enrolled)
- United Way organizing consortium of community-based organizations
- Children's Resource & Referral of Santa Barbara County





Santa Barbara Unified
Every child, every chance, every day.

Instruction: Updates

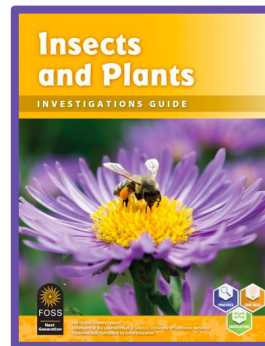
Dual Language Immersion

- SBJHS
- McKinley



Curriculum:

- FOSS
- ELD
- Ethnic Studies



Community Service:
Requirement suspended during distance learning

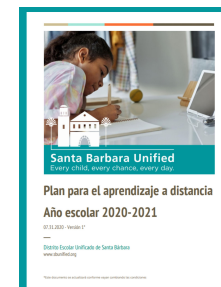
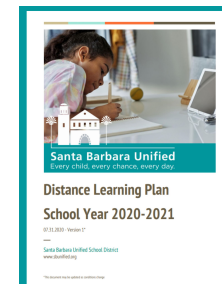
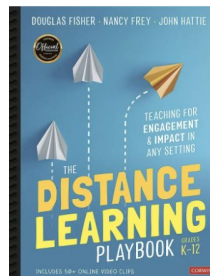


Teaching and Learning in a Distance Learning Model:

Distance Learning Plan

Professional Learning for Teachers:

- Distance Learning Playbook
- Advance Professional Learning
 - Shifting to Remote Learning
 - Social-Emotional Learning
 - Self-Paced Courses developed by our Technology Instructional Support Specialists
 - Multilingual Excellence Transforming Achievement (META):
 - Ongoing Professional Learning
 - Content- and grade-specific
 - Research-based instructional strategies incorporating META Throughlines





Santa Barbara Unified
Every child, every chance, every day.

Instruction: Resources and Innovation

*Additional Instructional Materials for Elementary Students

- Take-home Instructional Materials
- Take-home Art Kits
- Digital and Print Resources
- Reading, Writing, Phonics videos and Virtual Word Study
- K-6 Book Club sets; TK Shared Reading Kits
- Student Workbooks

*Developing prototype for outdoor education in collaboration with partners



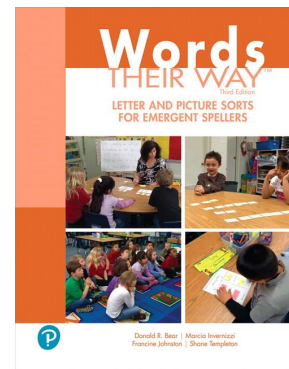


Zoom

Additional Supports



Newsela





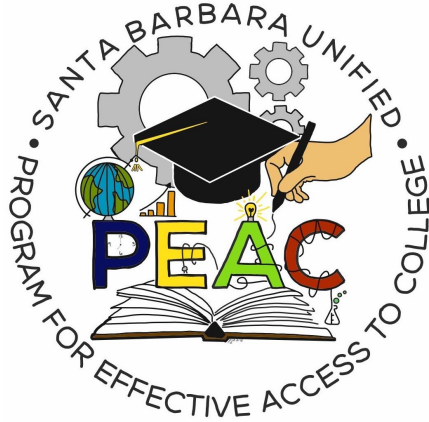
On demand online tutoring with

PAPER

Available to students in grades 4-12

- Unlimited
- 24/7
- All subject areas
- Both English and Spanish speaking trained and vetted online educators
- Essay review with annotations turned around within 24 hours
- Live, text based, built-in collaboration tools
- Tutoring session logs provide teachers with critical information regarding students' strengths and areas for growth





SBUnified PEAC Online Tutoring

- Available to PEAC & AVID students in grades 9-12
- Monday - Thursday, 4:00pm - 6:30pm via Zoom Video Platform
- Focusing on high school Science and Math courses
- Attendance taken daily and shared with Santa Barbara Unified academic counselors
- College level tutors, comprised of 80% local high school grads
- Santa Barbara Unified PEAC Learning and Tutoring Centers are privately funded



Substitute Teacher Plan

- HR is working on a plan for substitute teachers for distance learning

Negotiations

- SBTA
 - Reached agreement on schedules for all levels.
 - Teachers do have access to their classrooms to teach distance learning model.
 - School sites will be open for selected services that will need to be conducted in person
- CSEA
 - Working on an addendum to our original COVID MOU from March. Most of content focuses on health and safety of employees as they return to work.

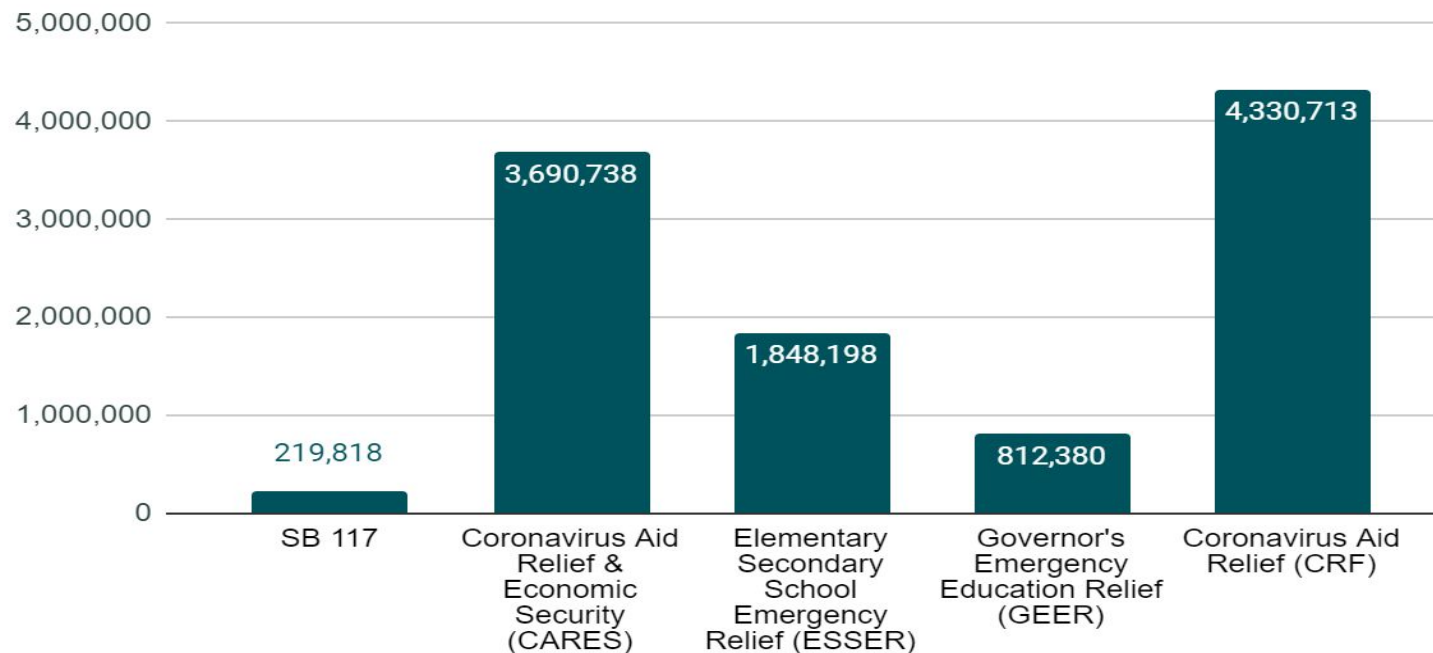
Employee Leaves

- Interactive Dialogue
 - Employees with disabilities or health impairment who need accommodations
- Flexible Work Modifications
 - Employees with health, safety, or childcare concerns where modification may be needed





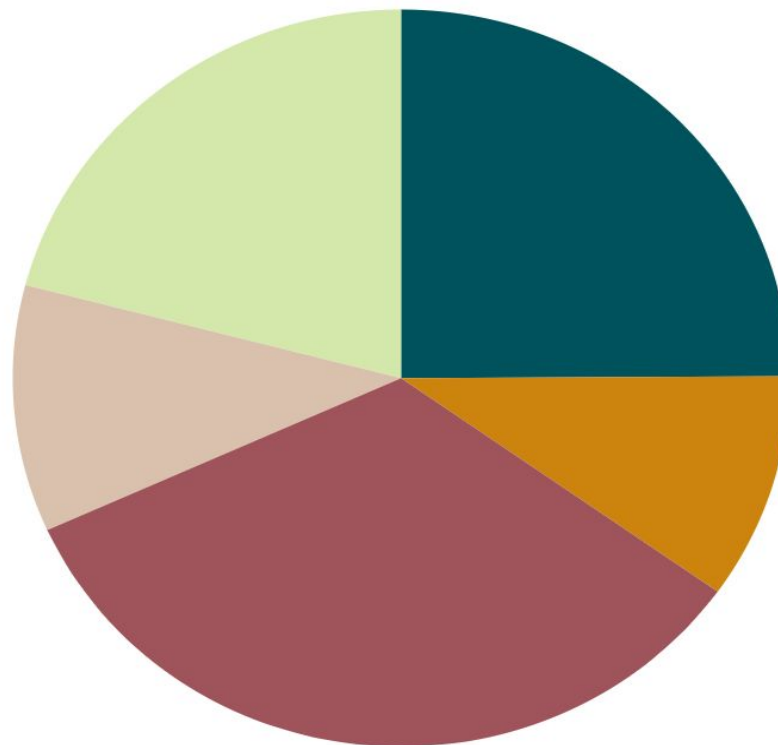
COVID-19 Related Revenue





COVID-19 Related Expenditures

- Education Materials & Technology
24.91%
- Staffing 9.91%
- Food 33.41%
- Mental Health 10.83%
- Personal Protective Equipment (PPE)
20.93%



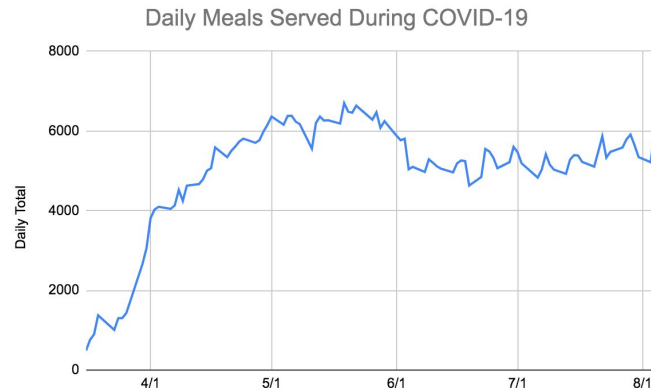


Operations: Food Services Update

- **Who can we serve?**
 - Current federal waivers will make it more challenging
 - New regulations will require us to obtain some form of student identification (ID card, ID number, last name, etc.)
 - We will serve breakfast and lunch at 11 sites and supper at 4 sites
- **How do we staff?**
 - Safely rotate all of our staff; 75% producing and distributing meals on any given day and 25% on-call and ready to substitute if staff is impacted by COVID
- **What are the costs?**
 - We have incurred significant losses during the COVID crisis
 - Due to tighter regulations we anticipate even more losses



515,285 Total Meals Served Since School Closures





- **What budget reductions have been made in food services?**
 - Terminated the leasing of the Mobile Cafes
 - We no longer provide free breakfasts for those who don't qualify due to high income
 - Renegotiated vendor program agreements
 - Terminated the lease in Santa Maria
 - Renegotiated contracts with vendors and training programs
 - Reduced some labor due to attrition



[2020-21 School Year Enrollment Timeline](#) (Link to Data)

- Decline of 125 students in the past month
- Elementary comprise 22% of total enrollment but represent 65% of decrease
 - Adams, Roosevelt (Outliers)
 - Cleveland, McKinley (Transfers, Moves)





Santa Barbara Unified
Every child, every chance, every day.

Campus Safety Checks

