

Santa Barbara Unified School District

Board Report #8

October 13, 2020

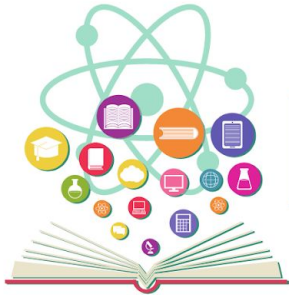


Santa Barbara Unified
Every child, every chance, every day.

DRIVERS FOR SCHOOL REOPENING

PRIORITIES FOR FALL 2020

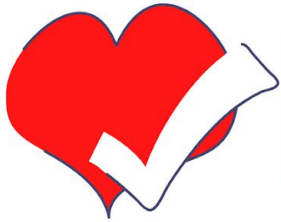
Instruction



**Community &
Family
Engagement**



**Health &
Wellness**



**Facilities &
Operations**



**Governance &
Leadership**



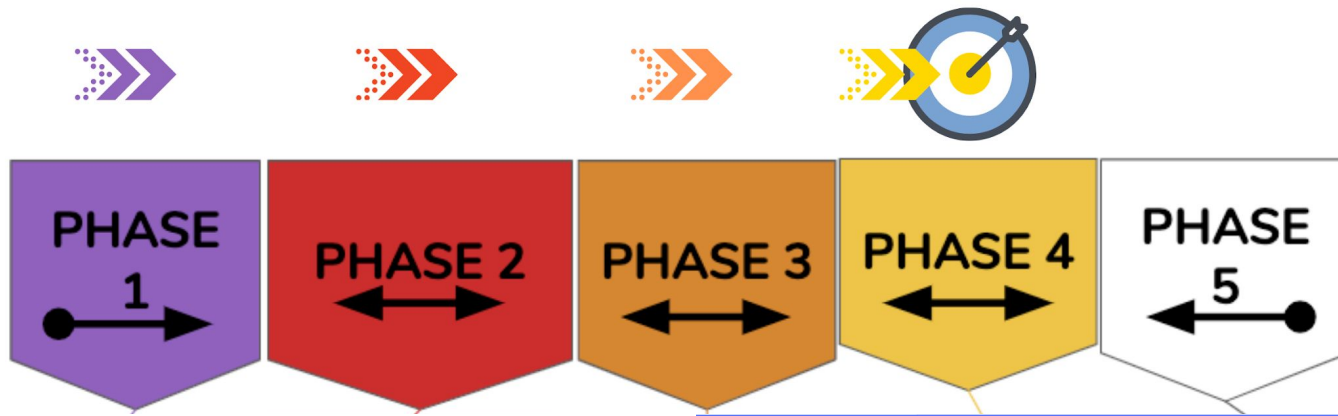
Santa Barbara Unified
Every child, every chance, every day.



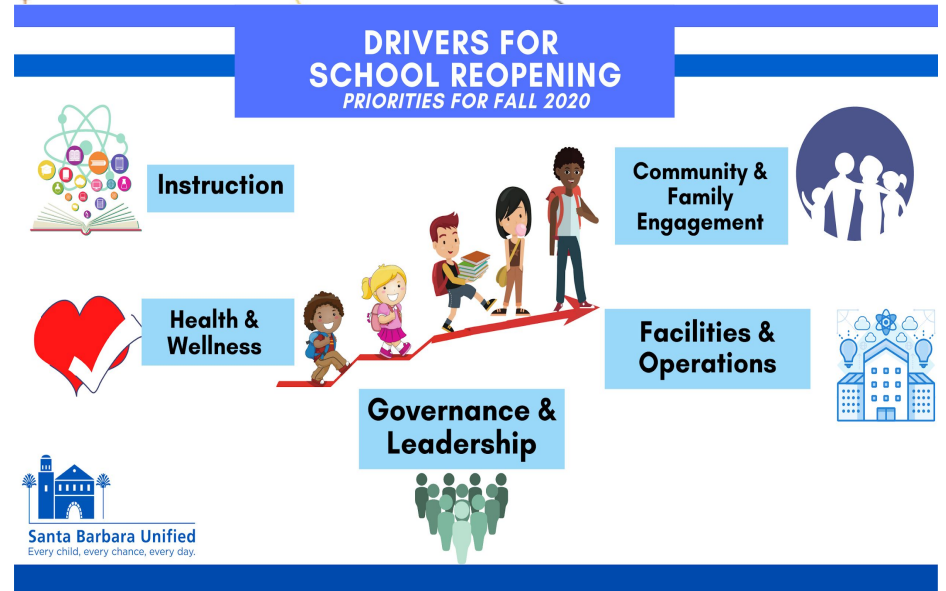
Given SB County current COVID-19 risk stage approaching Moderate “Orange” level, the progress made in small cohorts, poll results from all our stakeholders, safety considerations, and continuity of learning for students:

We are seeking the Board’s approval on the following:

- Begin in-person learning with a Hybrid model at **elementary** campuses on November 9 (when our county is *projected* to be in the Orange/Moderate COVID-19 Transmission tier)
- Begin in-person learning with a Hybrid model at **secondary** campuses on January 19 (when our county is *projected* to be in the Orange/Moderate or Gold/Minimal COVID-19 Transmission tier, and the first day of the second semester)
- Authorize staff to expand in-person opportunities for learning and social-emotional support and enrichment on our **secondary** campuses



- Health and Safety Preparedness
- Facilities capacity
- Staffing availability
- Family choice for in-person or distance learning

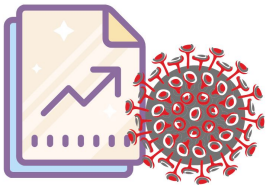




Employee Testing

- Completed 3 weeks of testing - 1250 employees tested
- All results received through 10/8/20 were negative

	Classified	Certificated	Management	Walk on Coaches & Subs
Tested	639	499	81	31
To be Tested	111	319	0	0





1 Step 1: Principal or supervisor contacts Dr. Wageneck

2 Step 2: Principal or supervisor contacts assigned District Nurse

3 Step 3: District Nurse contacts Susan Klein-Rothschild of SBPH

- Exceptions are three or more cases from different households at one school (Outbreak)

4 Step 4: District Nurse continues to consult with SBPH throughout the duration of the case

The process is detailed in [Active COVID-19 Case Protocol](#)

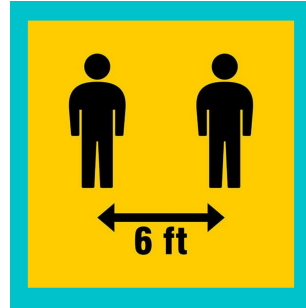




Face Masks



Hand Washing



Social Distancing



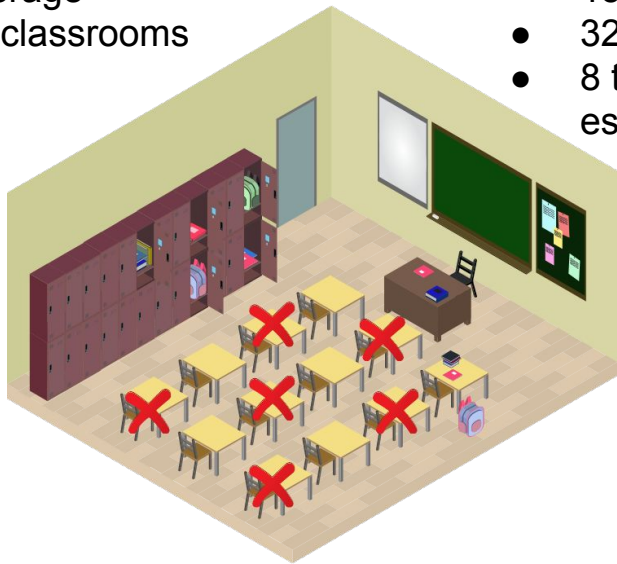
Cleaning and Disinfecting



Social Distancing Factor

School Pre-COVID Full in-person (example)

- 536 students
- 24 teachers
- 23 students per teacher average
- 34 classrooms



Social Distancing Factor = 15 students per classroom avg.

- $536 \times 11\% = 59$
- 477 students
- 24 teachers
- 15 students per teacher
- 32 classrooms needed
- 8 teachers needed (\$600,000 est. cost Nov. - June)

HYBRID A/B Schedule: 50% of students ON CAMPUS

- 239 students
- 24 teachers
- 10 students per teacher
- 34 classrooms
- No additional teachers needed*
- Additional classified needed



Certificated Staff (818)

Teachers and other educators

- 55 medical or childcare leaves
 - 22 elementary
 - 33 secondary
- 763 teachers available
- Staff on leave may be available for distance learning

Certificated Substitutes (31)

Teachers

Management Staff (81)

District and school administrators

Classified Staff (750)

Support staff

- 82 medical or childcare leaves
 - 31 elementary
 - 51 secondary
- 668 support staff available
- Staff on leave may be available for distance learning

Classified Substitutes

Support staff

- Open job pool for floater custodians and general education paraeducators
- Temporary, limited-term assignments only

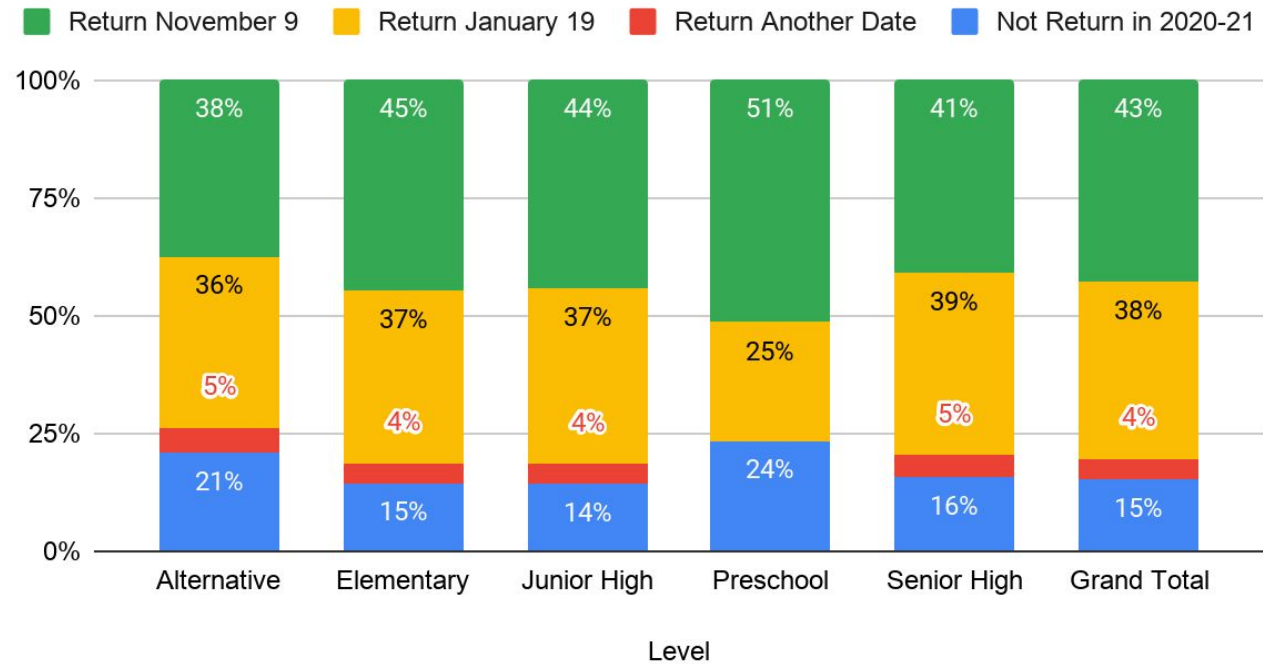
Parent Poll



Santa Barbara Unified
Every child, every chance, every day.

Question: Are you comfortable with your student returning to campus for 2 days a week when SBUnified reopens for hybrid in-person learning?

Family Preference by Level



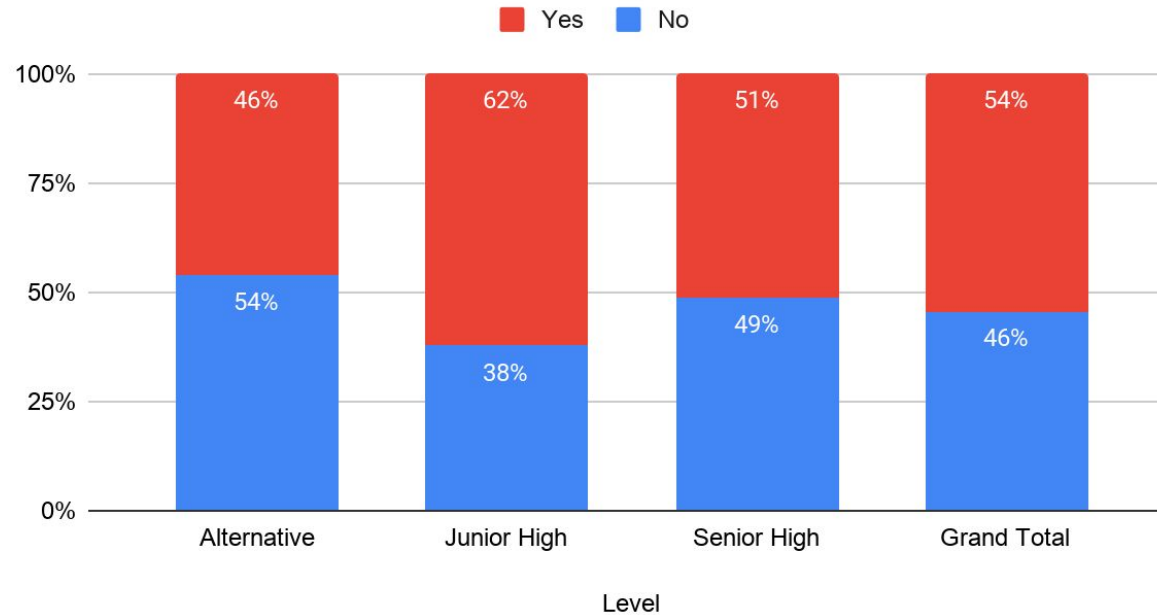
Student Poll



Santa Barbara Unified
Every child, every chance, every day.

Question: Are you ready to return to school in person?

Student Response by Level



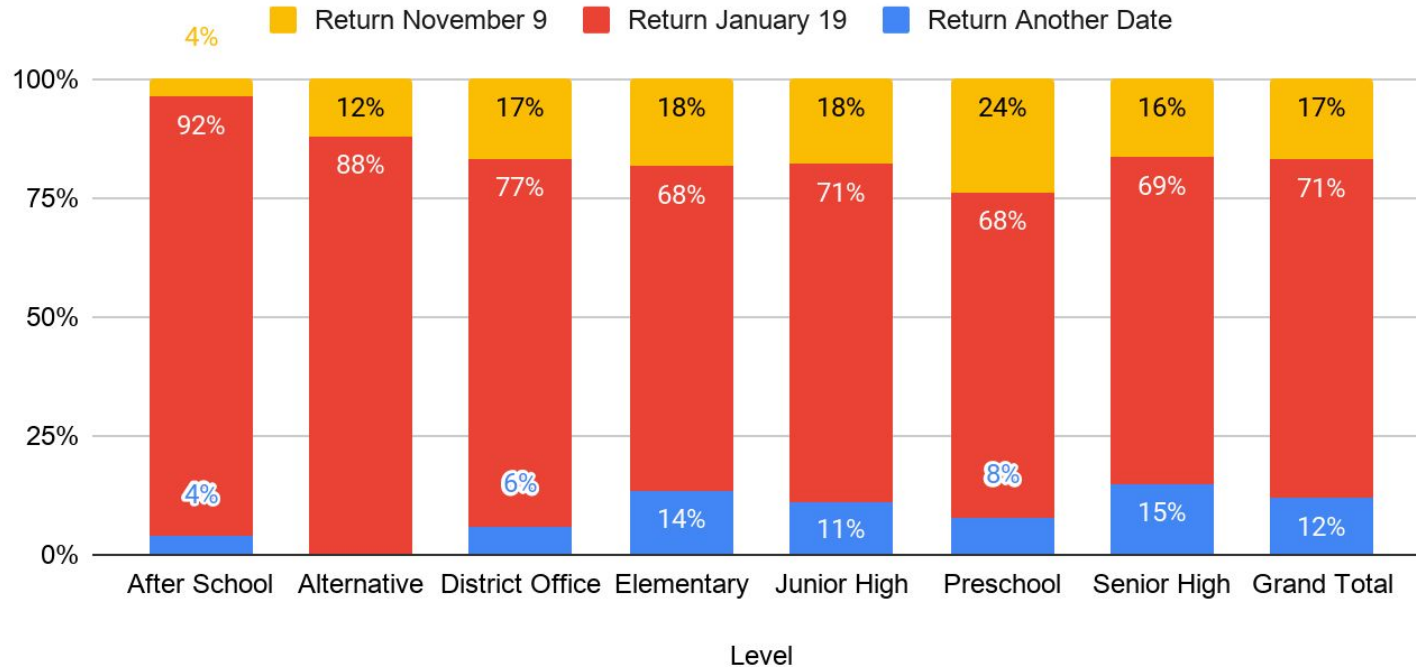
Staff Poll



Santa Barbara Unified
Every child, every chance, every day.

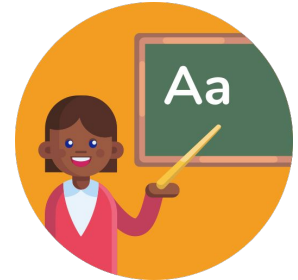
Question: Do you recommend that students return to campus? If so, when?

Staff Preference by Level





- **Health, safety, and supporting students' social emotional well being is a priority**
- **Pairing students and teachers that want to return to campus**
- **Hybrid will be a challenging transition for students**
- **Navigating the flu season and potential rise in COVID-19 cases**



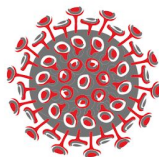


Santa Barbara Unified
Every child, every chance, every day.

Safely Returning to In-Person School

What you need to know...

1



Know the status of the virus in your community

2



Know your and your family's health risks

3



Know your school's Health & Safety Plan

Go to sbunified.org
for more info





Given SB County current COVID-19 risk stage approaching Moderate “Orange” level, the progress made in small cohorts, poll results from all our stakeholders, safety considerations, and continuity of learning for students:

We are seeking the Board’s approval on the following:

- Begin in-person learning with a Hybrid model at **elementary** campuses on November 9 (when our county is *projected* to be in the Orange/Moderate COVID-19 Transmission tier)
- Begin in-person learning with a Hybrid model at **secondary** campuses on January 19 (when our county is *projected* to be in the Orange/Moderate or Gold/Minimal COVID-19 Transmission tier, and the first day of the second semester)
- Authorize staff to expand in-person opportunities for learning and social-emotional support and enrichment on our **secondary** campuses

Appendix - Hybrid Model in Elementary



Santa Barbara Unified
Every child, every chance, every day.

Elementary Hybrid A/B/C Model

SAMPLE

Monday		Tuesday		Wednesday	Thursday		Friday	
<i>*C group in distance learning Monday-Friday with Teachers on Alternative Assignment</i>								
A Group	B Group	A Group	B Group	A & B Group	A Group	B Group	A Group	B Group
In-Person Instruction from classroom	At-home Instruction with Specials instruction	At-home Instruction with Specials instruction	In-Person Instruction from classroom	*Small Group/ Synchronous/ Asynchronous intervention *Specials instruction *Staff Meetings/ Planning/PLC's	In-Person Instruction from classroom	At-home Instruction with Specials instruction	At-home Instruction with Specials instruction	In-Person Instruction from classroom
*TK/K 180 minutes *1-3 230 minutes *4-6 240 minutes (to follow regular school schedule)	*TK/K 180 minutes *1-3 230 minutes *4-6 240 minutes (to follow DL schedule)	*TK/K 180 minutes *1-3 230 minutes *4-6 240 minutes (to follow DL schedule)	*TK/K 180 minutes *1-3 230 minutes *4-6 240 minutes (to follow regular school schedule)	*TK/K 180 minutes *1-3 230 minutes *4-6 240 minutes (to follow DL schedule)	*TK/K 180 minutes *1-3 230 minutes *4-6 240 minutes (to follow regular school schedule)	*TK/K 180 minutes *1-3 230 minutes *4-6 240 minutes (to follow DL schedule)	*TK/K 180 minutes *1-3 230 minutes *4-6 240 minutes (to follow DL schedule)	*TK/K 180 minutes *1-3 230 minutes *4-6 240 minutes (to follow regular school schedule)

*a teacher on any given day, may have Group A in-person and check-in with Group B via zoom

Appendix - January 19 Hybrid Model in Junior High



Santa Barbara Unified
Every child, every chance, every day.

- Student body will be divided into 2 groups: A and B
- 6 courses will be divided into Quarter 3 (Periods 1, 3, 5) and Quarter 4 (Periods 2, 4, 6)
- For each course each week, students will experience:
 - 2 80-minute in-person learning sessions w/teacher (on campus)
 - 2 80-minute independent learning sessions (distance)
 - 1 80-minute virtual learning session w/teacher (distance)
- Students who select 100% distance learning will be enrolled in Independent Study

Appendix - January 19 Hybrid Model in Senior High



Santa Barbara Unified
Every child, every chance, every day.

- Student body will be divided into 2 groups: A and B
- Students will be enrolled in new courses with new teachers.
- During a two-week cycle, for each course, students will experience:
 - 5 80-minute in-person learning sessions w/teacher (on campus)
 - 5 80-minute independent learning sessions (distance)
- Students who select 100% distance learning will be enrolled in Independent Study

Appendix - Re-entry Advisory Task Force



Santa Barbara Unified
Every child, every chance, every day.

Alejandra Mahoney • Allison Keenan • Andrea Fuentes • Carlina Gonzalez • Carlos Ojeda
Caroline Harrah • Casie Killgore • Catherine Young • Cathy Neushul • Chelsea Swanson • Devon Azzam
Elise Simmons • Ellen Huner • Erika Papac • Erin Spence • Frankianne Gallardo • Gene Horstin
Guy Walker • Jaclyn Jimenez • James Koenig • Janina Martinez • Jennifer Bean • Jennifer Capshaw • Audrey Gamble
Jennifer Foster • Jon Clark • Juliet Clark-Ruiz • Justin Ryan • Karina Huerta • Kelly Choi • Kim Kotnik
Kip Glazer • Lisa Guillen • Liz Rubio • Maggie Light • Marcia Gonzalez • Margie Yahyavi • Michelle Cordero
Melissa Ewart • Melissa Fitch • Michelle Lotze • Michelle Robertson • Mike Mowers • Monica Carmona
Negin Parvin • Paige Swanson • Patty Aguilar • Phoenix Plotner • Rosa Cavaletto • Brianna Lane • Jarrod Bradley
Shannon Curtis • Shawn Hill • Steve Harding • Vanessa Cavaletto • Connie Alexander • Joanna Romo
Jon Young • Guadalupe Olivares • Kamala Shalhoub • Sonia Salazar • Alanna Shea • Manuela Fierros
Emily Williams • Miriam Aguilera • Norma Gijon • Rechelle Ringer • Tracey Pigatti • Veronica Carrisales
• Anabel Sanchez • Blanca Avila • Claudia Vega • Dan Meisel • Fatima Limon • Genoveva Carro • Kayleen Chilton
Maria Valdez • Rocio Cantu • Sara Chalmers • Veronica Valencia