

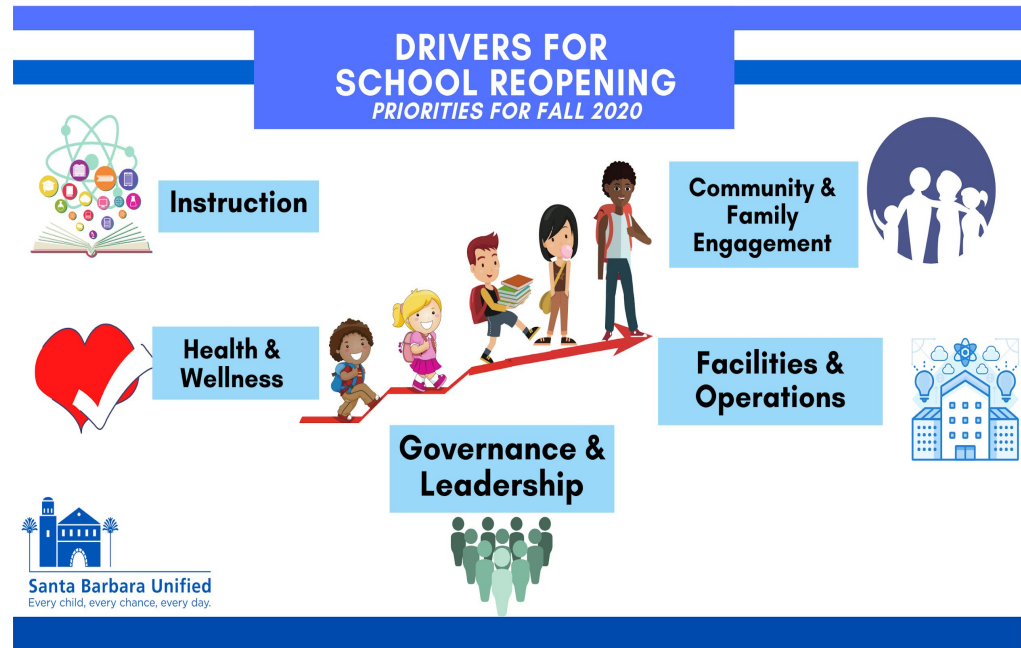
# **Santa Barbara Unified School District COVID Board Report #14 January 26, 2021**



**Santa Barbara Unified**  
Every child, every chance, every day.

# COVID UPDATE

- County Public Health
- Health and Safety Preparedness
- Facilities capacity
- Staffing availability
- Family choice for in-person or distance learning



# COVID UPDATE

Susan Klein-Rothschild, SB County Public Health

## ANTICIPATED CDPH Monitoring Status: 1/26

**Adjusted case  
must be below  
25/100K for  
schools to  
reopen**

Santa Barbara County  
metrics

**49.5**

Adjusted case rate for tier  
assignment

New cases per day per 100K  
(unadjusted)

**73.2**

Positivity rate

**13.3**

Health Equity Metric: **19.3**



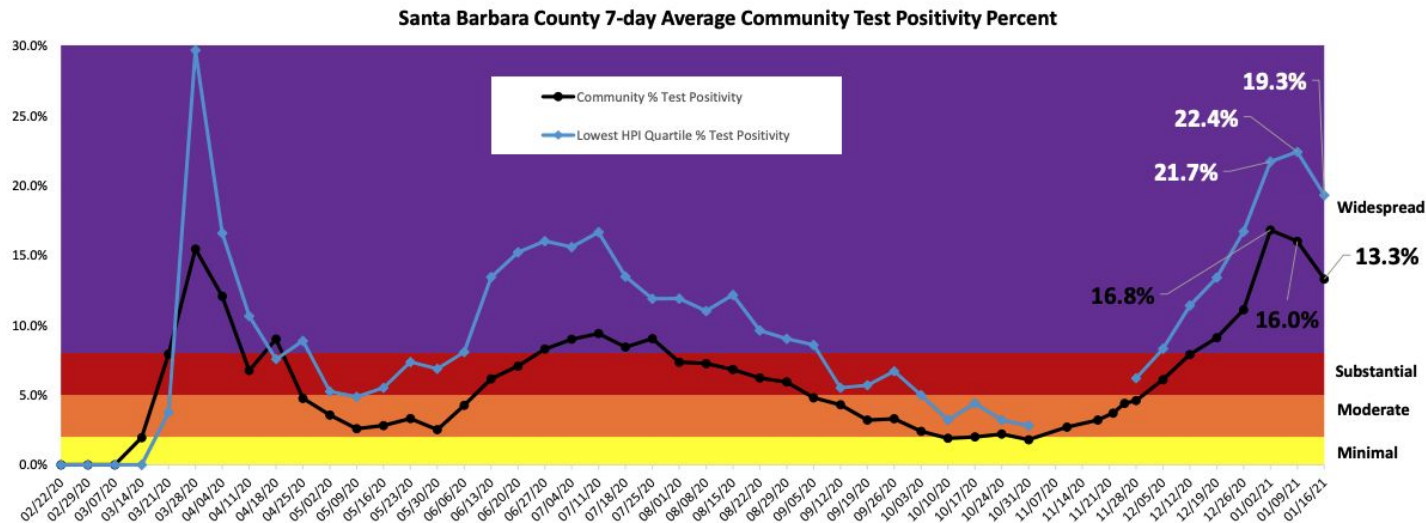
Last Updated 1/19/2021

All data and tier assignments are based on results from week ending Jan 16, 2021

# COVID UPDATE

Susan Klein-Rothschild, SB County Public Health

## ANTICIPATED: Blueprint Metrics for 1/26/21



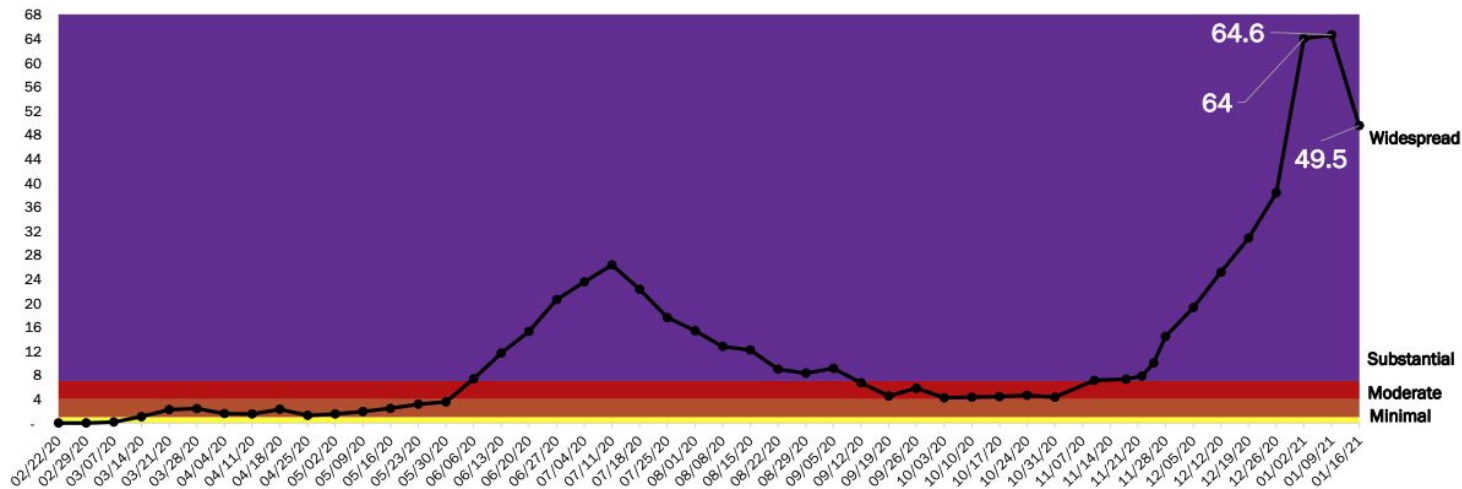
As of 11/15, CDPH changed the Case Rate and Testing Positivity metrics to reflect a 4-day lag instead of a 7-day lag. HPI data was not released the weeks with 4-day lag data. As of 11/28 data, the State reverted back to the 7-day lag.

# COVID UPDATE

Susan Klein-Rothschild, SB County Public Health

## ANTICIPATED: Blueprint Metrics for 1/26/21

Santa Barbara County 7-day Average Adjusted\* Case Rate per 100,000 Community Residents



\* Case rates as of 8/29 to current have been adjusted based on State metrics; As of 11/15 CDPH changed the Case Rate and Testing Positivity metrics to reflect a 4-day lag instead of a 7-day lag. As of 11/28 data, the State reverted back to the 7-day lag.

update on 1/25/2021

# COVID Cases: Breakdown of Ages 0-17 in SB County

| Positive COVID Cases: Ages 0-17 |                               |                               |
|---------------------------------|-------------------------------|-------------------------------|
| Age                             | Nov 8, 2020 -<br>Dec 12, 2020 | Dec 13, 2020 -<br>Jan 9, 2021 |
| 0-5                             | 58                            | 122                           |
| 6-12                            | 108                           | 259                           |
| 13-18                           | 218                           | 517                           |
| <b>TOTAL</b>                    | <b>384</b>                    | <b>898</b>                    |

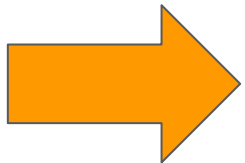
# COVID UPDATE: State Guidance

## New guidance: California Department of Public Health

- New evidence – globally and nationally
- Frequency of infection in elementary aged children
- Less severe disease
- Elementary age children get it most frequently from someone in their household
- Transmission in schools is not common
- Core strategies include masks, physical distancing, enhanced ventilation, and symptom screening.

## Keys to move to in-person learning

- Phase-in with the elementary ages first
- Provide state level support and accountability (hotline)
- **SB Unified has taken steps and is ready to begin in-person learning in elementary schools when permitted to do so**



**Schools should reopen when:**  
**Adjusted Case Rate is below 25 per 100,000 residents**

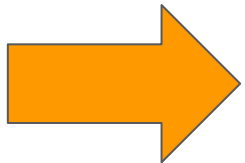
# COVID UPDATE: Vaccinations

## Distribution of Vaccines:

1. Healthcare workers and those living in congregate care settings such as skilled nursing are first for vaccinations.
2. Currently vaccinating all over the age of 75 years.
3. Next on list: essential workers such as those working in education and child care.

To keep informed about when it is your turn to be vaccinated:

- Visit the Public Health Department website [www.sbcphd.org](http://www.sbcphd.org)
- Watch the weekly SBC press conferences at 4:30 pm on Fridays (channel 20)
- Monitor local media
- Soon there will be an application called My Turn



**Biggest factor impacting ability to vaccinate = SUPPLY**

\*We do not yet have any vaccines approved for children.

# Governor Newsom Update: What it means for SBUnified

| California's Safe Schools Framework 4 Pillars  | SBUnified Thoughts and Response   |
|--|---|
| <p>1. Funding to support reopening</p>   | <ul style="list-style-type: none"> <li>• Funding to support in-person instruction</li> <li>• Equity focus by targeting students with the greatest level of need</li> </ul>    |
| <p>2. Safety and mitigation measures for classrooms</p> <ul style="list-style-type: none"> <li>• Testing (staff and students)</li> <li>• PPE</li> <li>• Contact Tracing</li> <li>• Vaccinations</li> </ul> | <ul style="list-style-type: none"> <li>• Prioritizes vaccination of educators</li> <li>• Access to N-95/Surgical Grade masks for teachers</li> </ul>                          |
| <p>3. Hands on oversight and assistance for schools</p>  | <ul style="list-style-type: none"> <li>• Replaces waiver system for reopening</li> <li>• Cross-agency consistency amongst health jurisdictions</li> </ul>                     |
| <p>4. Transparency and accountability for families and school staff</p>  | <ul style="list-style-type: none"> <li>• Creates statewide public data system to monitor school reopening statuses</li> <li>• Anonymous Statewide Reporting System</li> </ul> |

# COVID UPDATE: Latest Legislative Analysis

## California Public Health Criteria for When Schools Are Permitted to Open

|  | Effective Starting<br>August 2020  | Effective Starting<br>January 2021  |
|--|--|---|
| <b>High-Needs Students<br/>(Small Cohorts)</b>   | Permitted regardless of tier.  | No change.  |
| <b>TK-Grade 6</b>  | Red Tier for 14 days, except for elementary schools with approved waivers. | Five-day average case rates below 25 cases per 100,000 people, halts previous waiver process. |
| <b>Grades 7-12</b>   | Red Tier for 14 days.  | Red Tier for five days.   |
| <p>Notes: Under the Red Tier, seven-day average case rates are between 4 and 7 cases per 100,000 people and seven-day average testing positivity is between 5 percent and 8 percent. In Orange and Yellow Tiers, schools are permitted to reopen.</p> <p>TK = transitional kindergarten.</p> |  |   |

# COVID UPDATE: Governor's "Safe Schools for All" Plan

- Funding to support in-person instruction
- Equity focus by targeting students with the greatest level of need
- Cross-agency consistency amongst health jurisdictions
- Increased access to PPE for LEA
- Prioritizes vaccination of educators
- Replaces waiver system for reopening
- Creates statewide public data system to monitor school reopening statuses

**Deadline February 1**



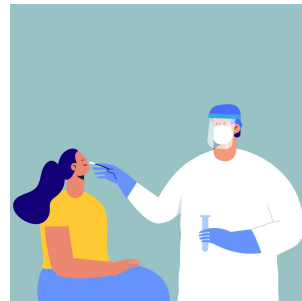
# COVID UPDATE: Fiscal Impact of Staff/Student Testing

## Governor's **Proposed** Staff and Student Testing

**Cost** Estimated funding for staff and student testing: \$370 per ADA: **\$4.6m**  
Cost of testing students and staff weekly for 4 months: **\$3.5m**

**Staffing**

**Time**



# COVID UPDATE: Student Survey - Staying Connected!

What type of WiFi do you primarily use at home for distance learning?



| Cox        | District Hotspot | Other   |
|------------|------------------|---------|
| 96% (1325) | 2% (35)          | 2% (31) |



**Cox:** How often do you experience slow WiFi performance during Zoom classes?

| Always  | Often     | Sometimes | Rarely    | Never   |
|---------|-----------|-----------|-----------|---------|
| 3% (47) | 14% (201) | 41% (581) | 35% (484) | 6% (77) |

**Cox:** How often do you experience dropped connections during Zoom classes?

| Always  | Often     | Sometimes | Rarely    | Never   |
|---------|-----------|-----------|-----------|---------|
| 1% (16) | 10% (135) | 34% (478) | 45% (619) | 7% (99) |

**6th-12th Grade Students Surveyed :: 10% Response Rate**

# COVID UPDATE: Student Survey - Staying Connected!



What type of WiFi do you primarily use at home for distance learning?

| Cox        | District Hotspot | Other   |
|------------|------------------|---------|
| 95% (1117) | 3% (35)          | 2% (23) |



**Hotspot:** How often do you experience slow WiFi performance during Zoom classes?

| Always  | Often   | Sometimes | Rarely  | Never  |
|---------|---------|-----------|---------|--------|
| 17% (6) | 20% (7) | 49% (17)  | 11% (4) | 3% (1) |

**Hotspot:** How often do you experience dropped connections during Zoom classes?

| Always  | Often   | Sometimes | Rarely  | Never  |
|---------|---------|-----------|---------|--------|
| 11% (4) | 23% (8) | 46% (16)  | 17% (6) | 3% (1) |

**6th-12th Grade Students Surveyed :: 10% Response Rate**



➡ As of Monday, 1/25/2021 we have had 94 total positive COVID cases on site:

- 20 students and 74 staff

➡ Since January 4, 2021 we have had:

- 59 Cases on school sites or in district offices
- 23 of those cases occurred the week of January 19, 2021.



**Santa Barbara Unified**  
Every child, every chance, every day.

# Small Cohorts & Athletics

| Cohort/Pod                | Total number |
|---------------------------|--------------|
| Students in Small Cohorts | 1395         |
| Students in Athletics     | 982          |
| Staff/Adults              | 395          |

| Number of Small Academic Cohorts | Number of Small Elective Cohorts |
|----------------------------------|----------------------------------|
| 96                               | 18                               |

*Number of known transmission cases of COVID-19 on campus =*



# Small Cohorts



**Santa Barbara Unified**  
Every child, every chance, every day.

| School     | Enrollment Total | Number of Cohorts | Enrollment Cohorts | % in Small Cohort |
|------------|------------------|-------------------|--------------------|-------------------|
| Adams      | 534              | 8                 | 70                 | 13%               |
| Cleveland  | 286              | 8                 | 71                 | 25%               |
| Franklin*  | 493              | 5                 | 50                 | 10%               |
| Harding*   | 349              | 6                 | 74                 | 21%               |
| McKinley*  | 268              | 1                 | 8                  | 3%                |
| Monroe     | 358              | 7                 | 47                 | 13%               |
| Roosevelt  | 470              | 5                 | 37                 | 8%                |
| SBCA*      | 246              | 4                 | 50                 | 20%               |
| Washington | 542              | 3                 | 35                 | 7%                |



**Santa Barbara Unified**  
Every child, every chance, every day.

## Small Cohorts

| School    | Enrollment | Number of Cohorts | Enrollment Cohorts | % in Small Cohort |
|-----------|------------|-------------------|--------------------|-------------------|
| GVJH      | 758        | 4                 | 40                 | 5%                |
| La Colina | 890        | 10                | 113                | 13%               |
| La Cumbre | 477        | 2                 | 17                 | 4%                |
| SBJH      | 711        | 5                 | 61                 | 9%                |
| Alt. Ed.  | 206        | 1                 | 14                 | 7%                |
| DPHS      | 1,997      | 19                | 234                | 12%               |
| SMHS      | 2,008      | 13                | 195                | 10%               |
| SBHS      | 2,170      | 9                 | 73                 | 3%                |

Preschool -- 2 Cohorts with 8 Students

Staff Childcare-- 10 Cohorts with 105 Students @ Four Campuses



## **Southern Section CIF announcement: Fall Sports Championships cancelled due to pandemic conditions**

- No league play in the foreseeable future therefore no championships because of lack of progress toward orange tier.
- Season end dates announced March 27 - April 7
- Cross-Country, Football, Girls Volleyball, Water Polo (G/B)





## Food Services

# 1 million meals served!



# Re-entry Timeline



Jan. 4, 2021

Distance Learning  
Continues

Jan. 11, 2021

Return of Small  
Academic Cohorts  
and Athletics

Jan. 11-25, 2021

Staff Covid  
Testing

Jan. 21-25, 2021

Student Survey:  
Distance  
Learning

As COVID  
rates decline,  
families  
reconfirm  
program  
model

**Goal**

Return to Hybrid  
Learning when  
criteria met:  
**Adjusted  
Case Rate  
<25/100K  
residents**