

# **Santa Barbara Unified School District**

## **COVID Board Report #16**

### **February 23, 2021**

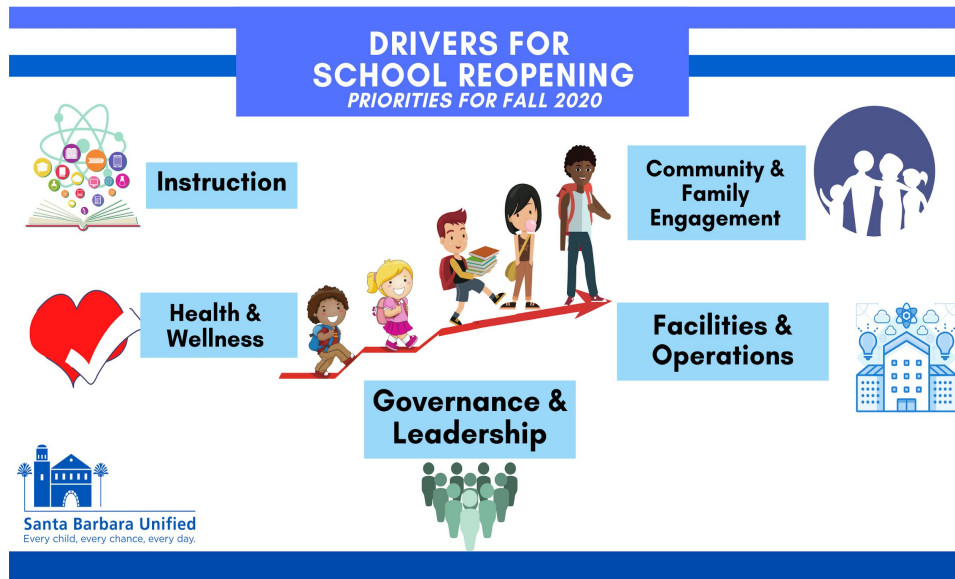
# **DRAFT**



**Santa Barbara Unified**  
Every child, every chance, every day.

# COVID UPDATE

- ✓ County Public Health
- ✓ Health & Safety Preparedness
- ✓ Facilities capacity
- ✓ Staffing availability
- ✓ Family choice for in-person or distance learning



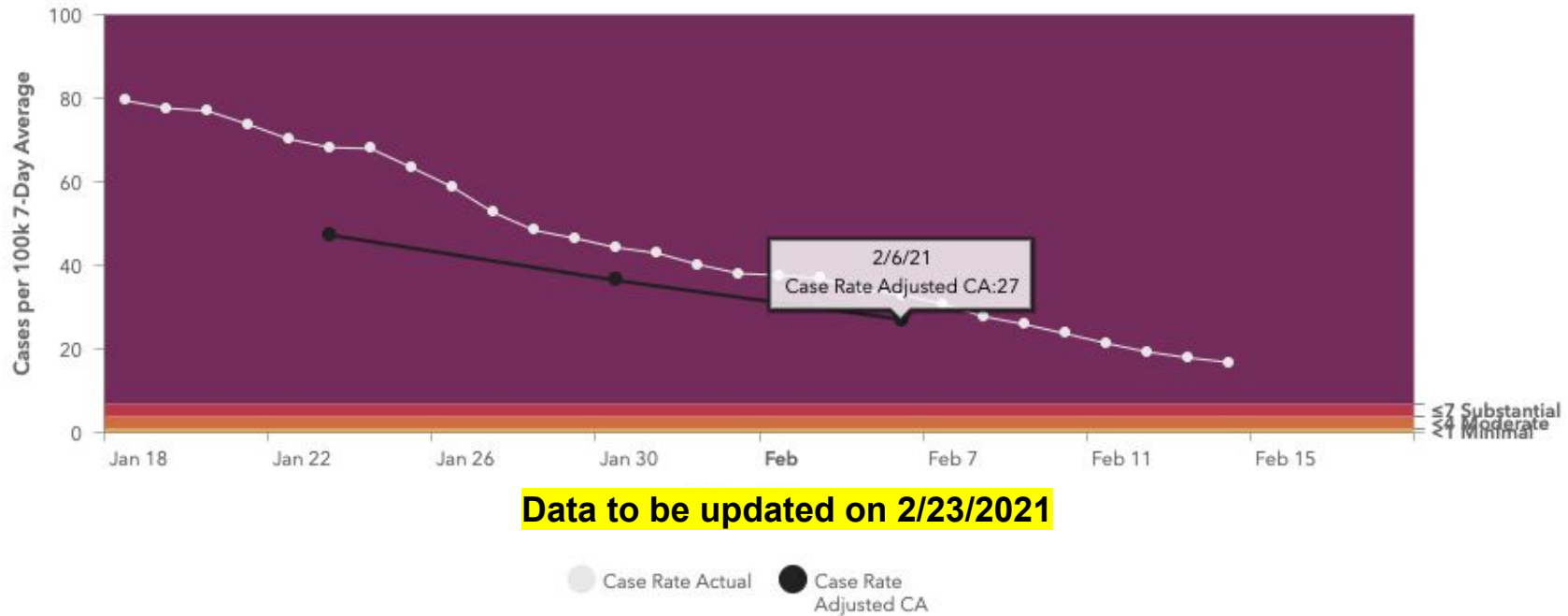
# 1,776 Meals

hand delivered to families in quarantine



# COVID UPDATE--SB County Public Health

## Community Case Rate, Actual and Adjusted



# ELEMENTARY PARENT VERIFICATION SURVEY RESULTS

## Model Selection Changes

Switched from In-Person to Distance

6.0%

Switched from Distance to In-Person

3.3%

New Enrollee

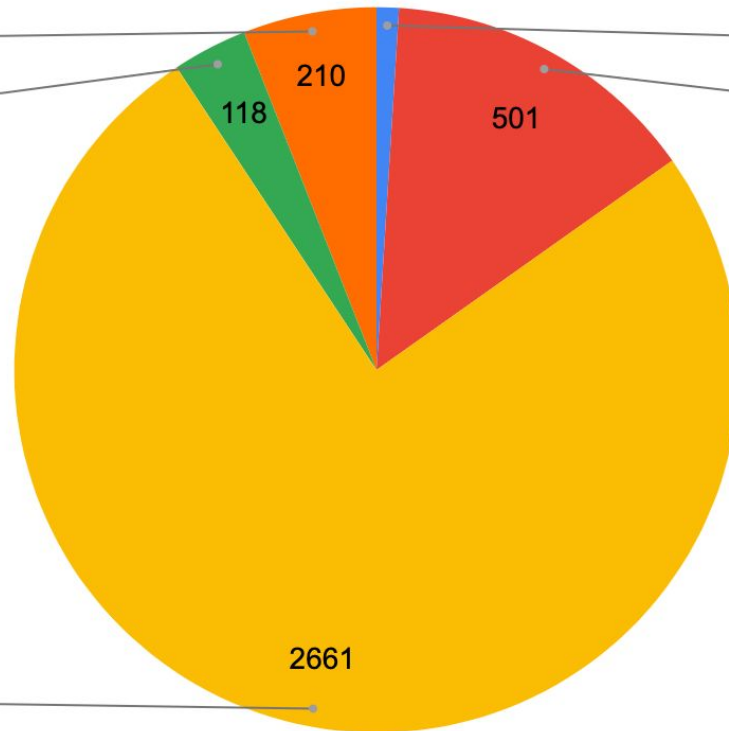
1.0%

Remained with Distance

14.2%

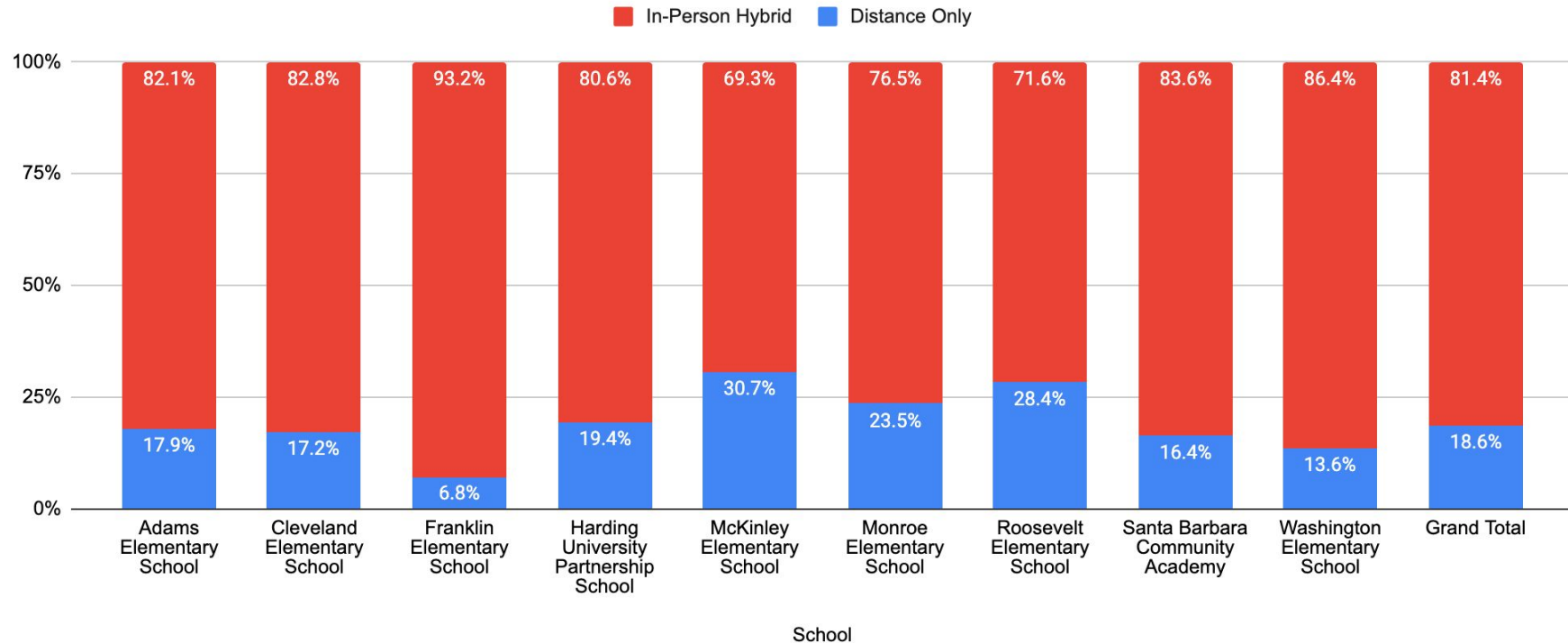
Remained with In-Person

75.5%



# ELEMENTARY PARENT VERIFICATION SURVEY RESULTS

## Model Selection by School



# Secondary Return to In Person

Return to  
Red Tier



Safety Review  
Application



Family Choice  
Confirmation



## **Covid-19 Update**

Santa Barbara Unified

TOTAL CASES	119
TOTAL STAFF CASES	84
TOTAL STUDENT CASES	30
TRANSMISSION ON DISTRICT PROPERTY	10
PEAK WEEK	January 11-15



# Staff COVID Testing



**Every Two Weeks**



**COVID Testing**



**Testing at Each  
School Site**

# Student Covid Testing



**Symptomatic  
at School**



**Symptomatic  
or In Close  
Contact**



**Parent or  
Guardian  
Request**

# APPENDIX: Elementary Learning Options

In-Person Hybrid Group A or B			Distance Learning
<b>Group A &amp; B alternate days in person:</b> <b>Group</b> <b>A=Monday/Thursday</b> <b>B=Tuesday/Friday</b> <b>*A&amp;B=Wednesday online</b>	<b>In Person Instructional Day</b> <b>50% of Students In-Person Learning With Teacher</b>	<b>At-Home Instructional Day</b> <b>50% of Students Online Learning With Teacher Check-in</b>	<b>Group C</b> <b>100% Online Distance Learning With Teacher</b>
<b>What is the model program structure?</b>	<ul style="list-style-type: none"> <li>• Daily whole Class SEL/Check-In with teacher</li> <li>• 2 days of in-person instruction live with teacher</li> <li>• ½ day distance learning with teacher (Wednesday from 8a-11a)</li> <li>• Socially Distant</li> <li>• Masks and washing hands protocols</li> <li>• Staggered arrival and dismissal times</li> <li>• Follows closely regular school schedule</li> </ul>	<ul style="list-style-type: none"> <li>• Daily whole Class SEL/Check-In with teacher</li> <li>• 2 days of at-home synchronous &amp; asynchronous</li> <li>• ½ day distance learning with teacher (Wednesday from 8a-11a)</li> <li>• Specialized teachers in Art, Music, PE, STEAM or Enrichment live online instruction part of the day</li> <li>• Asynchronous instruction from teacher (pre-teach or re-teach)</li> <li>• Follows Distance Learning schedule</li> </ul>	<ul style="list-style-type: none"> <li>• Distance learning with teacher (may or may not be their current teacher)</li> <li>• Daily live online instruction</li> <li>• May be in a single grade or combination class</li> <li>• Follows Distance Learning schedule</li> </ul>

# APPENDIX: ELEMENTARY DISTANCE LEARNING “C” GROUP

## Elementary SAMPLE Distance Learning Hybrid Instructional Blocks TK-K=180 mins

	Monday	Tuesday	Wednesday	Thursday	Friday
8:30-9:30 (60min)	LEARNING BLOCK	LEARNING BLOCK	LEARNING BLOCK	LEARNING BLOCK	LEARNING BLOCK
9:30-9:40	BREAK	BREAK	BREAK	BREAK	BREAK
9:40-10:40 (60min)	LEARNING BLOCK	LEARNING BLOCK	*LEARNING BLOCK (until 11am)	LEARNING BLOCK	LEARNING BLOCK
10:40-10:50	BREAK	BREAK	*11:00-12:00 Student Lunch	BREAK	BREAK
10:50-11:50 (60min)	LEARNING BLOCK	LEARNING BLOCK	*12:00-1:00 (60min) ASYNCHRONOUS LEARNING	LEARNING BLOCK	LEARNING BLOCK
12:00 End of student day	LUNCH	LUNCH		LUNCH	LUNCH
12:45-*2:00 *End of Teacher Day	Student Support	Student Support		Student Support	Student Support

# APPENDIX: ELEMENTARY DISTANCE LEARNING “C” GROUP

## Elementary Hybrid A/B/C Model

*\*C group in distance learning Monday-Friday  
with Teachers on Alternative Assignment*

Monday		Tuesday		Wednesday	Thursday		Friday	
A Group	B Group	A Group	B Group	A & B Group	A Group	B Group	A Group	B Group
<b>In-Person Instruction from classroom</b>  *TK-6th Instruction begins *8:30-8:45am Whole class A&B check-in  *TK/K *2:00pm dismissal  1st-3rd *2:20pm dismissal  *2:40pm 4th-6th dismissal  *staggered arrival and dismissal time	<b>At-home online Instruction with Specials instruction</b>  *TK-6th Instruction begins *8:30-8:45am Whole class A&B check-in  *TK/K 180 minutes *1-3 230 minutes *4-6 240 minutes (to follow DL schedule)	<b>At-home online Instruction with Specials instruction</b>  *repeat At-home schedule	<b>In-Person Instruction from classroom</b>  *repeat In-person schedule	<b>Distance Learning with Teacher And Specialized Teachers in Art, Music, PE, STEAM</b>  *8:30-11:00am Whole Class Attendance, SEL/Check-In with Group A&B	<b>In-Person Instruction from classroom</b>  *repeat In-person schedule	<b>At-home online Instruction with Specials instruction</b>  *repeat At-home schedule	<b>At-home online Instruction with Specials instruction</b>  *repeat At-home schedule	<b>In-Person Instruction from classroom</b>  *repeat In-person schedule